

SPEC SHEET + MEASUREMENTS



Carhartt® Rain Defender® Paxton Heavyweight Hooded Zip-Front Sweatshirt. CT100614

Product photo



For those days when a heavy jacket is just too much to wear on the job, this durable, water-repellent sweatshirt is the solution.

- 13-ounce, 75/25 cotton/poly blend or 55/45 cotton/poly blend with Rain Defender durable water-repellent finish (Black, New Navy)*
- 55/45 cotton/poly blend (Carbon Heather)
- Attached jersey-lined three-piece hood with drawcord closure
- Antique-finish brass front zipper
- Two front hand warmer pockets with hidden security pocket inside
- Stretchable, spandex-reinforced, rib knit cuffs and waistband
- Carhartt label sewn on left hand warmer pocket
- Loose fit

**Please note: Select colors in Carhartt fleece are currently transitioning from a 75/25 cotton/poly blend to a 55/45 cotton/poly blend. Weight and fabric properties remain the same. Your order may contain a combination of both fabrics.*

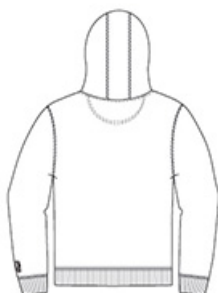
CARE INSTRUCTIONS

Machine wash cold with like colors, Do not bleach, Tumble dry low remove promptly.

Sketches



front



back

SPEC SHEET + MEASUREMENTS



Carhartt® Rain Defender® Paxton Heavyweight Hooded Zip-Front Sweatshirt. CT100614

PRODUCT MEASUREMENTS

| | S | M | L | XL | 2XL | 3XL | 4XL |
|--------------------------------|--------|--------|--------|--------|--------|--------|--------|
| Body Length at Back | 28 | 29 | 29 | 30 | 30 | 31 | 31 |
| Chest | 22 1/2 | 24 1/2 | 26 1/2 | 28 1/2 | 30 1/2 | 32 1/2 | 34 1/2 |
| Sleeve Length from Center Back | 35 7/8 | 36 5/8 | 37 3/8 | 38 1/8 | 38 7/8 | 39 3/8 | 39 7/8 |

Body Length at Back: Measured from high point shoulder to finished hem at back.

Chest: Measured across the chest one inch below armhole when laid flat.

Sleeve Length from Center Back: Measure from Center Back neck to shoulder point to sleeve hem.

SIZE CHARTS

| | S | M | L | XL | 2XL | 3XL | 4XL |
|-------|-------|-------|-------|-------|-------|-------|-------|
| Chest | 34-36 | 38-40 | 42-44 | 46-48 | 50-52 | 54-56 | 58-60 |

SPEC SHEET + MEASUREMENTS



Carhartt® Rain Defender® Paxton Heavyweight Hooded
Zip-Front Sweatshirt. CT100614

HOW TO MEASURE



CHEST

Measure under the arm and
around the fullest part of the chest
with arms down, keeping tape
horizontal.

COLORS

Please note: PMS code information is shown only when an exact match is available.



Black
PMS BLACK
C



Carbon
Heather
PMS 7540C



New Navy
PMS 533C