

SPEC SHEET + MEASUREMENTS



Nike Therma-FIT Pocket Full-Zip Fleece Hoodie.

NKFD9859

Product photo



This full-zip hoodie with a zippered left arm pocket brings the heat to your workout with Therma-FIT fabric. Therma-FIT helps manage your body's natural heat to keep warm in cold-weather conditions.

- 7.4-ounce polyester Therma-FIT fabric with at least 50% recycled content
- Three-panel hood
- Black drawcords
- Dyed-to-match zipper
- Zippered left arm pocket
- Front pockets
- Self-fabric cuffs and hem
- Contrast embroidered Swoosh logo on left sleeve
- Contrast embroidered Therma-FIT logo on back hem

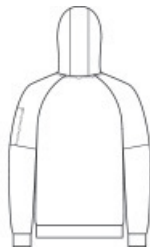
CARE INSTRUCTIONS

Machine Wash Cold. Wash Inside Out. Wash With Like Colors. Do Not Use Softeners. Do Not Use Bleach. Tumble Dry Low. Do Not Iron. Do Not Dry Clean.

Sketches



front



back

SPEC SHEET + MEASUREMENTS



Nike Therma-FIT Pocket Full-Zip Fleece Hoodie. NKFD9859

PRODUCT MEASUREMENTS

	XS	S	M	L	XL	2XL	3XL	4XL
Body Length at Back	26 3/8	26 3/4	27 1/8	27 7/8	28 3/4	29 1/2	30 1/4	31 1/8
Chest	20	21 5/8	23 1/8	24 3/4	26 3/4	28 5/8	30 5/8	32 5/8
Raglans and Dolmans Sleeve Length	31 3/8	31 3/4	32 1/4	32 5/8	33 1/8	33 3/4	34 1/4	34 7/8

Body Length at Back: Measured from high point shoulder to finished hem at back.

Chest: Measured across the chest one inch below armhole when laid flat.

Raglans and Dolmans Sleeve Length: Measure from neck edge to finished hem.

SIZE CHARTS

	XS	S	M	L	XL	2XL	3XL	4XL
Chest	32-35	35-37 1/2	37 1/2-41	41-44	44-48 1/2	48 1/2 -53 1/2	53 1/2 - 58	58-63

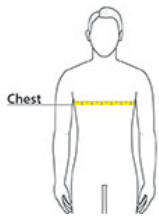
SPEC SHEET + MEASUREMENTS



Nike Therma-FIT Pocket Full-Zip Fleece Hoodie.

NKFD9859

HOW TO MEASURE



CHEST

Measure under the arm and around the fullest part of the chest with arms down, keeping tape horizontal.

COLORS

Please note: PMS code information is shown only when an exact match is available.



Anthracite
PMS 432C



Black
PMS BLACK
C



Charcoal
Heather
PMS 425C



Dark Grey
Heather
PMS 422C



Game Royal
PMS 2758C



Navy
PMS 533C



White